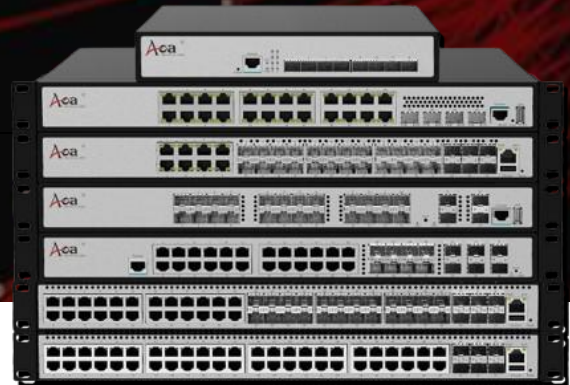


# CMS5300

## Managed Ethernet Switch

### L3+ Managed 10G Uplink Switch



### Overview

CMS5300 series managed switches adopt a new generation of high-performance hardware and software platforms, provide flexible and cost-effective Gigabit access and 10G uplink ports, support three-layer routing protocols, support ERPS ring network, and complete security protection. Mechanism, complete ACL/QoS policy and rich VLAN functions, easy to manage and maintain, suitable for enterprise and campus network establishment.

### Features

- Provides Gigabit Access and 10G SFP+ Uplink ports
- Support static routing, RIPv1/v2, OSPFv2, VRRP, BGP dynamic routing and policy routing
- Support multicast routing DVMRP/PIM-SM/PIM-DM
- Supports STP/RSTP/MSTP spanning tree protocol, ERPS ring network
- Support IEEE 802.1Q VLAN, Voice VLAN, QinQ configuration
- Supports IGMP v1/v2 multicast protocol and IGMP Snooping to meet multi-terminal high-definition video surveillance and video conferencing access requirements
- Port isolation, network storm suppression
- Supports Web, CLI, SNMP (V1/V2/V3), Telnet management
- Supports HTTPS, SSLV3, SSHV1/V2 and other encryption methods, making management more secure.
- Supports RMON, system logs, and port traffic statistics to facilitate network optimization and transformation.
- Supports LLDP, which facilitates the network management system to query and determine the communication status of the link.
- Supports CPU monitoring, memory monitoring, Ping detection, and cable length detection.
- Complete LED indicators to facilitate users to quickly identify the working status of the equipment
- Low power consumption
- CE/FCC/RoHS compliance

## Product List

Model	Configuration
 <p>CMS5300-8X</p>	Port: 8x 10G SFP+ Switch capacity: 160G Packet forwarding rate: 119Mpps MAC Address: 16k Power input: AC100~240V 50/60Hz, DC36-72V (Optional)
 <p>CMS5300-24T4X</p>	Port: 24x 10/100/1000M RJ45, 4x 10G SFP+ Switch capacity: 128G Packet forwarding rate: 95Mpps MAC Address: 16k Power input: AC100~240V 50/60Hz, DC36-72V (Optional)
 <p>CMS5300-24P4X</p>	Port: 24x 10/100/1000M (PoE), 4x 10G SFP+ Switch capacity: 128G Packet forwarding rate: 95Mpps MAC Address: 16k Power input: AC100~240V 50/60Hz, 400W
 <p>CMS5300-24S4X</p>	Port: 24x 1G SFP, 4x 10G SFP+ Switch capacity: 128G Packet forwarding rate: 95Mpps MAC Address: 16k Power input: AC100~240V 50/60Hz, DC36-72V (Optional)
 <p>CMS5300-24T8S6X</p>	Port: 24x 10/100/1000M RJ45, 8x 1G SFP, 6x 10G SFP+ Switch capacity: 360G Packet forwarding rate: 136Mpps MAC Address: 32k Power input: AC100~240V 50/60Hz, DC36-72V (optional)
 <p>CMS5300-24S8T6X</p>	Port: 24x 1G SFP, 8x 10/100/1000M RJ45, 6x 10G SFP+ Switch capacity: 360G Packet forwarding rate: 136Mpps MAC Address: 32k Power input: AC100~240V 50/60Hz, DC36-72V (optional)
 <p>CMS5300-24T24S6X</p>	Port: 24x 10/100/1000M RJ45, 24x 1G SFP, 6x 10G SFP+ Switch capacity: 360G Packet forwarding rate: 160Mpps MAC Address: 32k Power input: AC100~240V 50/60Hz, DC36-72V (Optional)
 <p>CMS5300-48T6X</p>	Port: 48x 10/100/1000M RJ45, 6x 10G SFP+ Switch capacity: 360G Packet forwarding rate: 160Mpps MAC Address: 32k Power input: AC100~240V 50/60Hz, DC36-72V (Optional)

## Software Feature

L2 Feature	
MAC Address	Automatic MAC address learning and MAC address aging static and dynamic MAC table entries modifying dynamic MAC aging time
VLAN	IEEE 802.1Q VLAN(Port Based VLAN) MAC Based VLAN IP Based VLAN Protocol Based VLAN GVRP VLAN QinQ VLAN Private VLAN
Ring Protection	ERPS (G.8032) STP (IEEE 802.1d) and RSTP (IEEE 802.1w) and MSTP (IEEE 802.1s) BPDU protection, Root protection, and Loopback protection
Multicast	IGMP V1/V2/V3 and IGMP Snooping MLD V1/V2 and MLD Snooping
Port Feature	Port Auto-negotiation and Force Speed Port Flow Control LACP link aggregation Port Isolation Storm Control Port Loop Protection
L3 Feature	
IP Routing	StaticRoute/RIP/OSPF/OSPFv3 BGP/RouterDiscovery/VRRP Policy Routing(PBR)/BFD Multicast Routing DVMRP/PIM-SM/PIM-DM
IPv6 Feature	ND(Neighbor Discovery) IPv6 interface IPv6 Ping, IPv6 Tracert, IPv6 Telnet
Network Security	
QoS	802.1P Queue Mapping and DSCP Queue Mapping SP and WRR queue scheduling DiffServ Qos Ingress speed limit and Egress speed limit
ACL	total 500 ACL Rule Entries MAC Extended ACL IPv4 Standard ACL IPv4 Extended ACL IPv6 ACL

Security	Multiple username and password management Anti-Dos Attack\Anti ARP Attack\Anti ICMP Attack combination binding of IP, MAC, Port, and VLAN port isolation and port security IEEE 802.1X authentication and limit the maximum number of users per port SSH V2.0 and HTTPS DHCP Relay and DHCP Server DHCPv6 Relay and DHCPv6 Server
Management Feature	
Management and maintenance	WEB network management CLI with Console and Telnet and SSH SNMPv1/v2c/v3,Support RMON LLDP/LLDP-MED system logs, file upgrades, and firmware upgrades CPU monitor\Memory monitor\Ping\Cable Length Test PoE Management

## Order Information

Model No.	Description
CMS5300-8X-xx	L3, 8x 10G SFP+
CMS5300-24T4X-xx	L3, 24x 10/100/1000M RJ45, 4x 10G SFP+
CMS5300-24P4X-xx	L3, 24x 10/100/1000M PoE, 4x 10G SFP+
CMS5300-24S4X-xx	L3, 24x 1G SFP, 4x 10G SFP+
CMS5300-24T8S6X-xx	L3, 24x 10/100/1000M RJ45, 8x 1G SFP, 6x 10G SFP+
CMS5300-24S8T6X-xx	L3, 24x 1G SFP, 8x 10/100/1000M RJ45, 6x 10G SFP+
CMS5300-24T24S6X-xx	L3, 24x 10/100/1000M RJ45, 24x 1G SFP, 6x 10G SFP+
CMS5300-48T6X-xx	L3, 48x 10/100/1000M RJ45, 6x 10G SFP+
Notes: CMS5200 is L2+, support static routing. xx for power input, AC=AC input, DC=DC input, AD=AC+DC input	



For further information, please visit our website <https://www.aoatech.com>

All rights are reserved by AOA Technology Co.,Ltd. AOA reserves the right to change, modify, transfer, or otherwise revise this publication without notice, and the most current version of the publication shall be applicable.